

**PRINCIPAL PARTICULARS**

LENGTH O.A.	abt. 179.90 m	DESIGNED DRAFT	10.00 m
LENGTH B.P.	171.50 m	SUMMER DRAFT	10.80 m
BREADTH MLD.	28.40 m	DEADWEIGHT (DESIGNED DRAFT)	abt. 31,500 M.T.
DEPTH MLD.	15.00 m	DEADWEIGHT (SCANTLING DRAFT)	abt. 35,000 M.T.

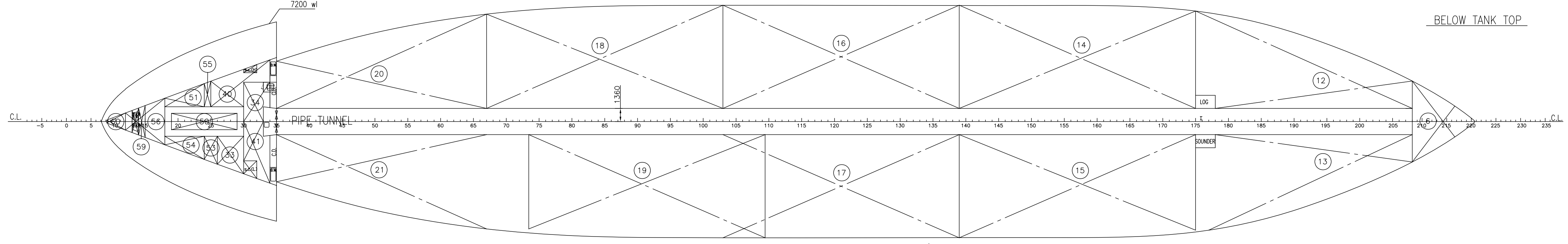
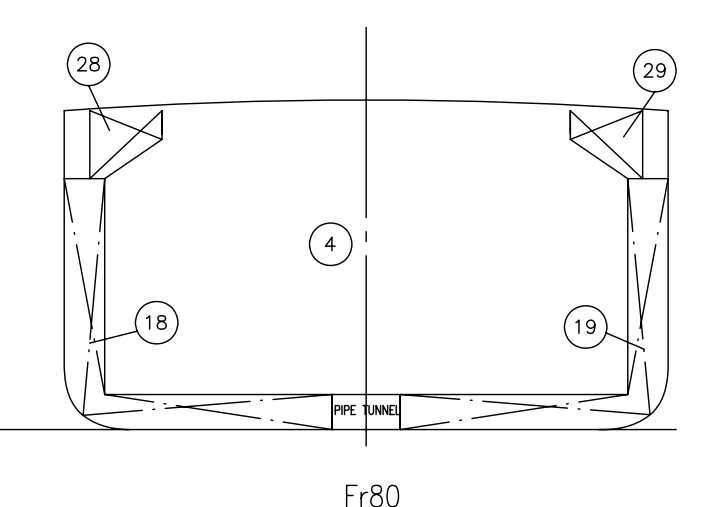
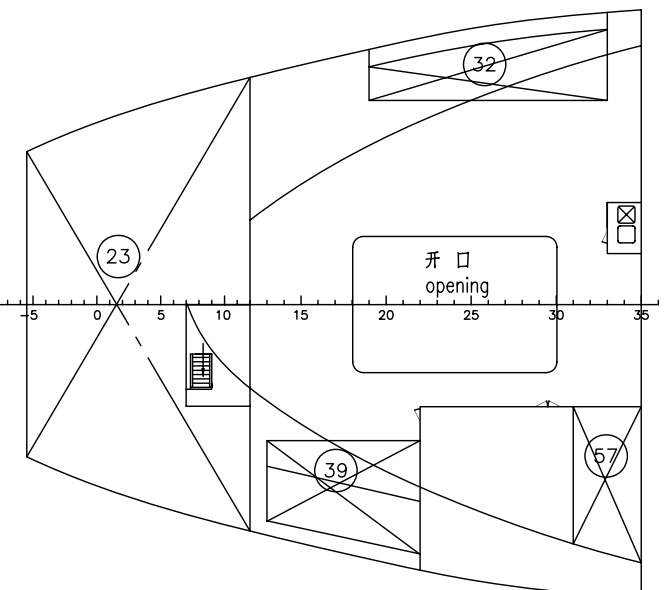
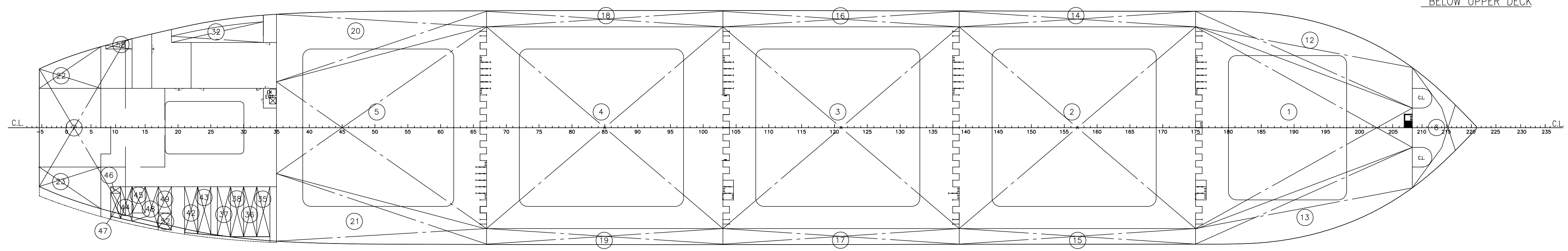
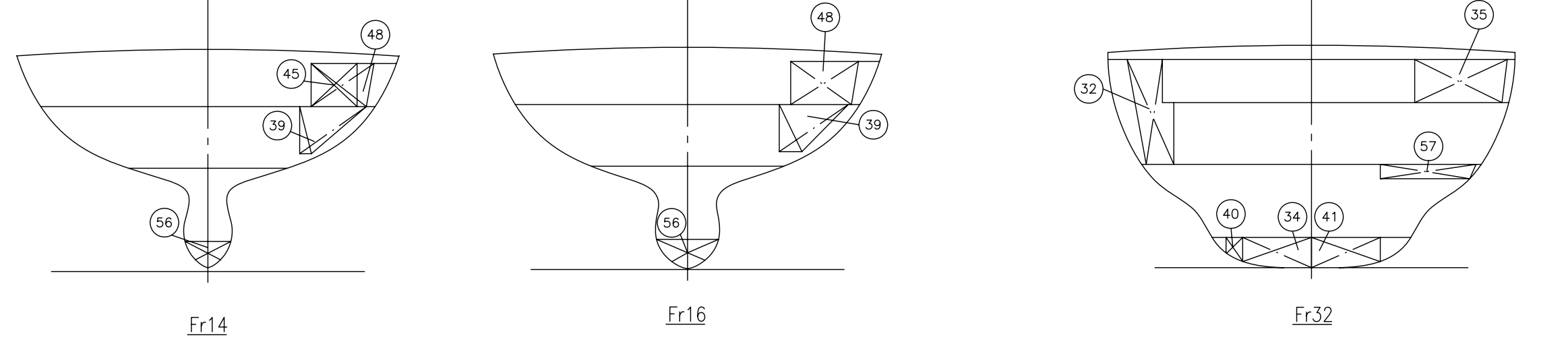
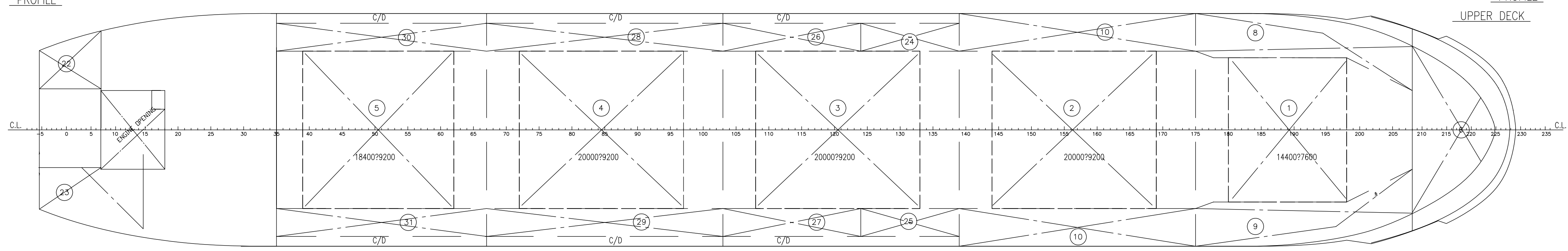
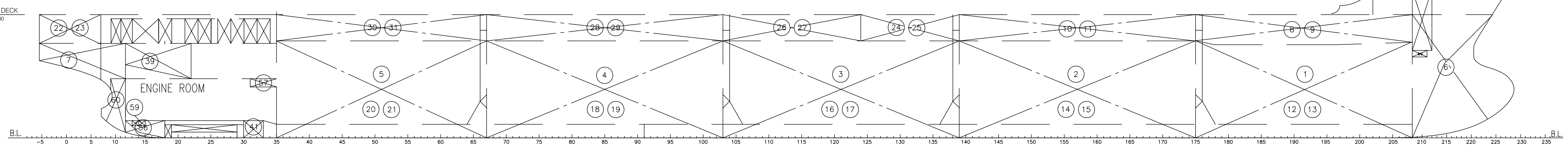
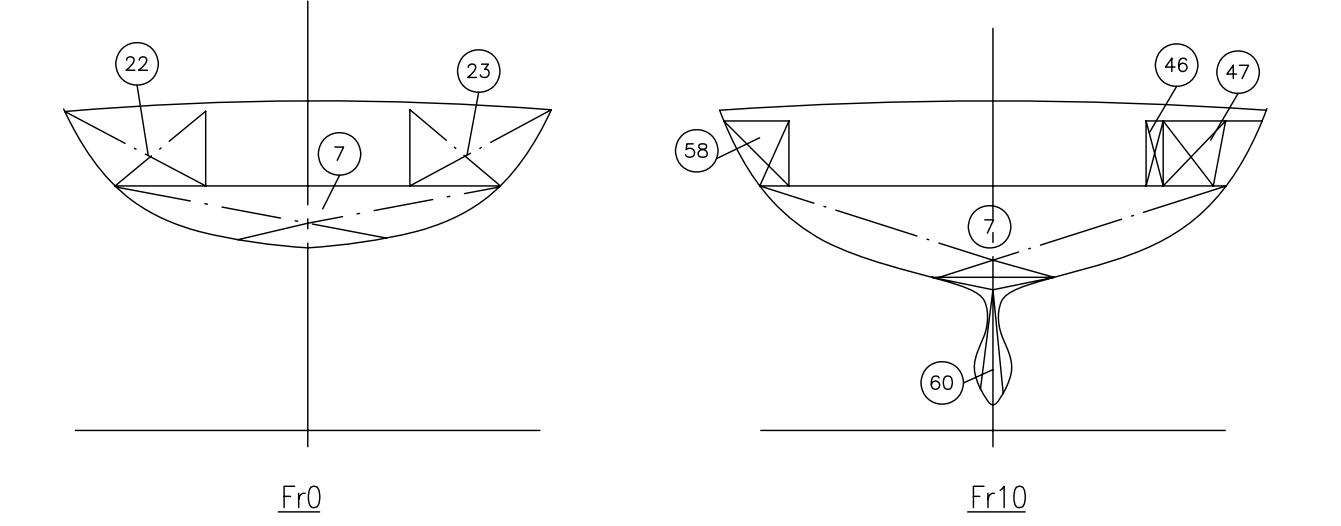
**ON DECK CARGO WEIGHT TABLE**

	DECK PART		HATCH COVER		TOTAL
	AREA(m <sup>2</sup> )	WEIGHT(t)	AREA(m <sup>2</sup> )	WEIGHT(t)	
No.1 ON DECK	210	840	253	835	1675
No.2 ON DECK	260	1040	384	1267.2	2307
No.3 ON DECK	260	1040	384	1267.2	2307
No.4 ON DECK	260	1040	384	1267.2	2307
No.5 ON DECK	245	980	353	1166	2146
TOTAL	1235	4940	1758	5802.6	10742

Remarks:  
 1. Allowable designed cargo weight:  
 upper deck : 4.0 t/m<sup>2</sup>  
 hatch cover : 3.3 t/m<sup>2</sup>  
 2. Deck area including upper deck side and cross deck  
 Hatch part area: hatch opening area only.  
 3. Each weight in the above table is shown allowable strength weight on upper deck and hatch part at the condition of uniform load, and actual loading work should be carried out considering stability, total longitudinal strength and etc.

**EXPLANATION OF SYMBOLS**

Vo (m<sup>3</sup>): volume not deducted for the structure in the compartment  
 V (m<sup>3</sup>): volume, V=Vo ?structure factor  
 L.C.G. (m): center of volume from after perpendicular  
 (+) sign shows fore from after perpendicular  
 (-) sign shows aft from after perpendicular  
 V.C.G. (m): center of volume from baseline  
 Imax (m<sup>4</sup>): transverse moment of inertia of free surface



NO.	NAME OF TANK	POSITION FR. NO.	VO (m <sup>3</sup> )	V (m <sup>3</sup> )	L.C.G. (m)	V.C.G. (m)	Imax (m <sup>4</sup> )
1	NO.1 CARGO HOLD	17520R	6945.4	4915.7	149.41	8.91	17946.7
2	NO.2 CARGO HOLD	11307S	10664.7	8019.3	133.59	8.73	30071.7
3	NO.3 CARGO HOLD	10310	9827.6	9711.4	94.18	8.83	15414.7
4	NO.4 CARGO HOLD	10301	10664.7	8019.3	95.99	8.73	30071.7
5	NO.5 CARGO HOLD	1347	1011.7	7971.9	18.49	9.13	11267.3
	TOTAL	44117R	44264.4	32624.7	92.01	8.96	

NO.	NAME OF TANK	POSITION FR. NO.	VO (m <sup>3</sup> )	V (m <sup>3</sup> )	L.C.G. (m)	V.C.G. (m)	Imax (m <sup>4</sup> )
1	NO.1 BALLAST TANK	17520R	6945.4	4915.7	149.41	8.91	17946.7
2	NO.2 BALLAST TANK	11307S	10664.7	8019.3	133.59	8.73	30071.7
3	NO.3 BALLAST TANK	10310	9827.6	9711.4	94.18	8.83	15414.7
4	NO.4 BALLAST TANK	10301	10664.7	8019.3	95.99	8.73	30071.7
5	NO.5 BALLAST TANK	1347	1011.7	7971.9	18.49	9.13	11267.3
	TOTAL	44117R	44264.4	32624.7	92.01	8.96	

NO.	NAME OF TANK	POSITION FR. NO.	VO (m <sup>3</sup> )	V (m <sup>3</sup> )	L.C.G. (m)	V.C.G. (m)	Imax (m <sup>4</sup> )
1	NO.1 OIL TANK	17520R	6945.4	4915.7	149.41	8.91	17946.7
2	NO.2 OIL TANK	11307S	10664.7	8019.3	133.59	8.73	30071.7
3	NO.3 OIL TANK	10310	9827.6	9711.4	94.18	8.83	15414.7
4	NO.4 OIL TANK	10301	10664.7	8019.3	95.99	8.73	30071.7
5	NO.5 OIL TANK	1347	1011.7	7971.9	18.49	9.13	11267.3
	TOTAL	44117R	44264.4	32624.7	92.01	8.96	

NO.	NAME OF TANK	POSITION FR. NO.	VO (m <sup>3</sup> )	V (m <sup>3</sup> )	L.C.G. (m)	V.C.G. (m)	Imax (m <sup>4</sup> )
1	NO.1 BALLAST WATER TANK	17520R	6945.4	4915.7	149.41	8.91	17946.7
2	NO.2 BALLAST WATER TANK	11307S	10664.7	8019.3	133.59	8.73	30071.7
3	NO.3 BALLAST WATER TANK	10310	9827.6	9711.4	94.18	8.83	15414.7
4	NO.4 BALLAST WATER TANK	10301	10664.7	8019.3	95.99	8.73	30071.7
5	NO.5 BALLAST WATER TANK	1347	1011.7	7971.9	18.49	9.13	11267.3
	TOTAL	44117R	44264.4	32624.7	92.01	8.96	

SHIP NAME: ORIENTAL HARMONY  
 IMO NO. : 9455399

BUILDER	NANJING DONGZE SHIPYARD CO.,LTD	HULL NO.	DZ06H-16
OWNER		CLASS	KR
TITLE	35,000 DWT BULK CARRIER	FINISHED PLAN	
DESIGNED		DWG. NO.	JH429G1-103-02
CHECKED		SCALE	WEIGHT PAGE DATE
VERIFIED			1:250 1/1
APPROVED			

SHANGHAI BESTWAY MARINE ENGINEERING DESIGN CO.,LTD  
 111 Cao Bao Road Shanghai, CHINA P.C:200233  
 Tel:86-21-6436 5500 Fax:86-21-5448 7783 Email: luckway@mail.online.sh.cn