

E.R. LOWER PLATFORM

机舱下平台

E.R. UPPER PLATFORM

机舱上平台

A DECK (6P)

A甲板

B DECK (9P)

B甲板

C DECK (7P)

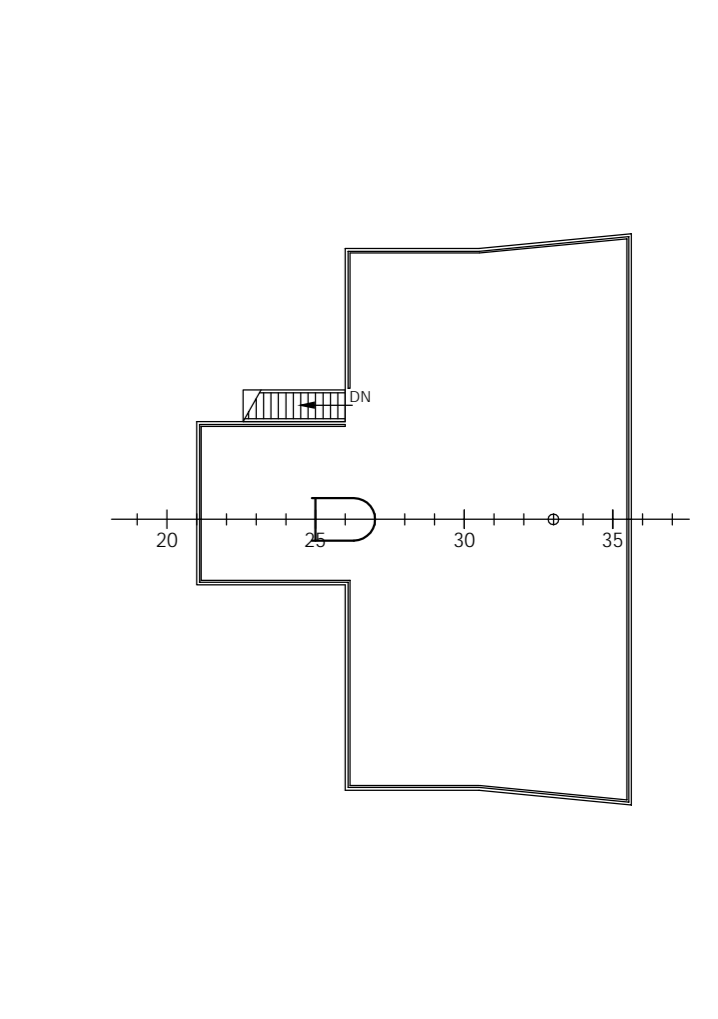
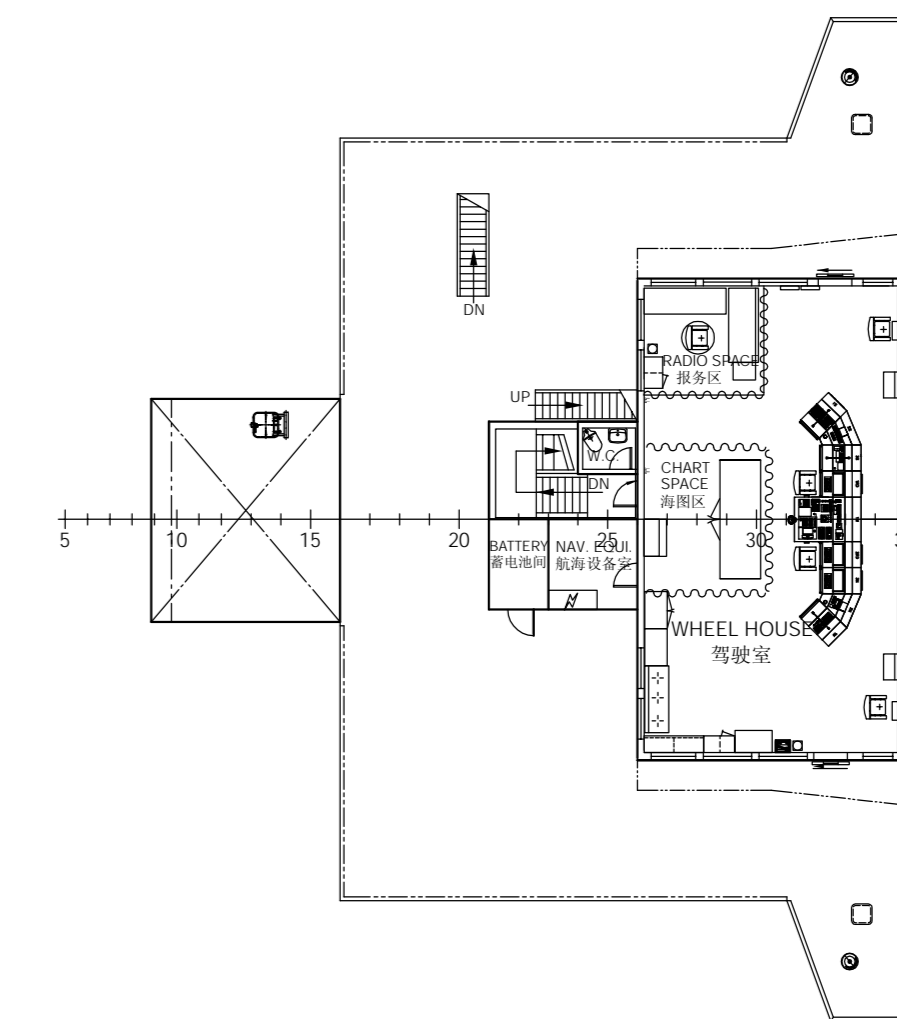
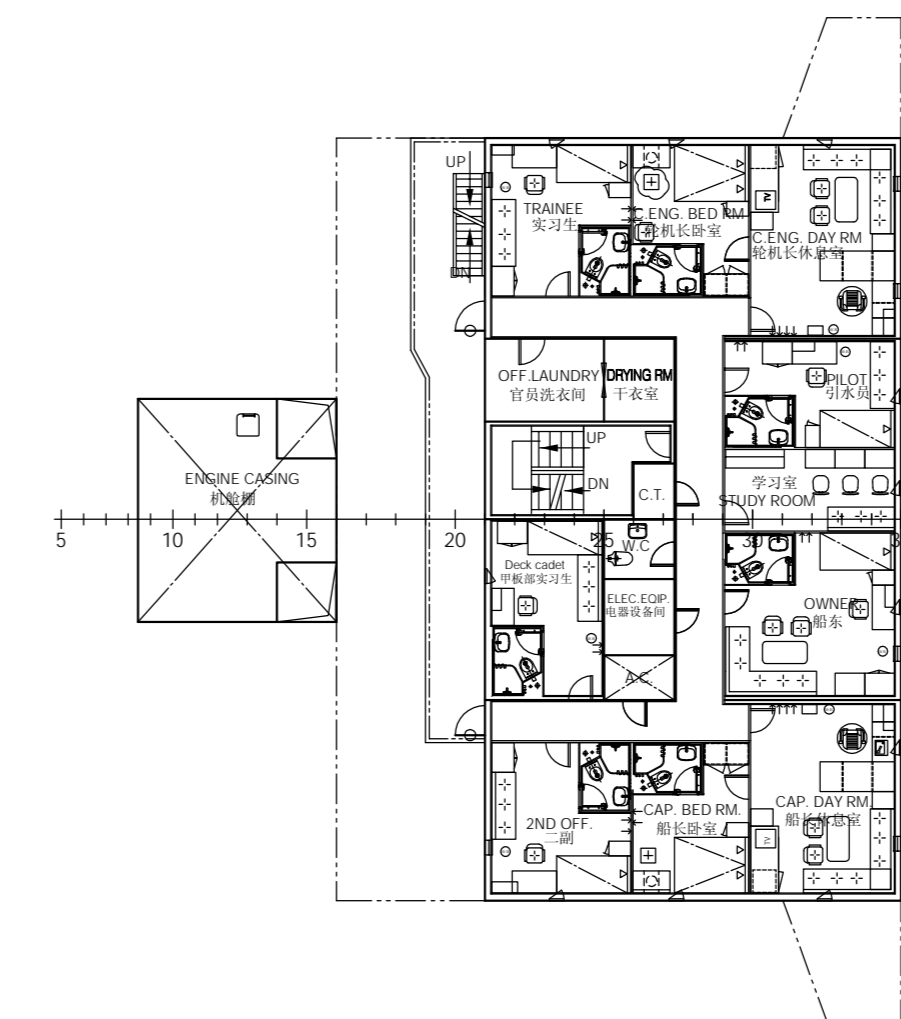
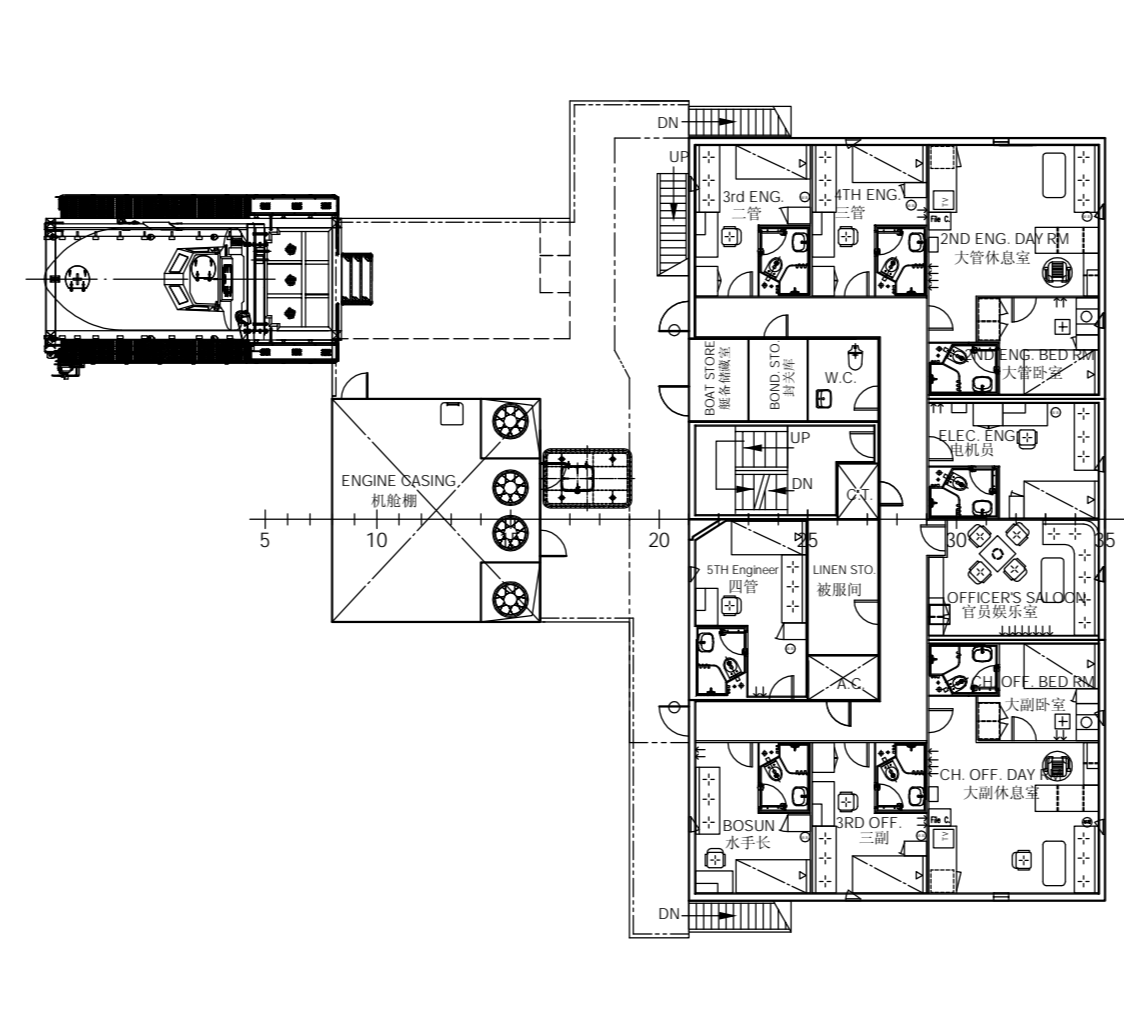
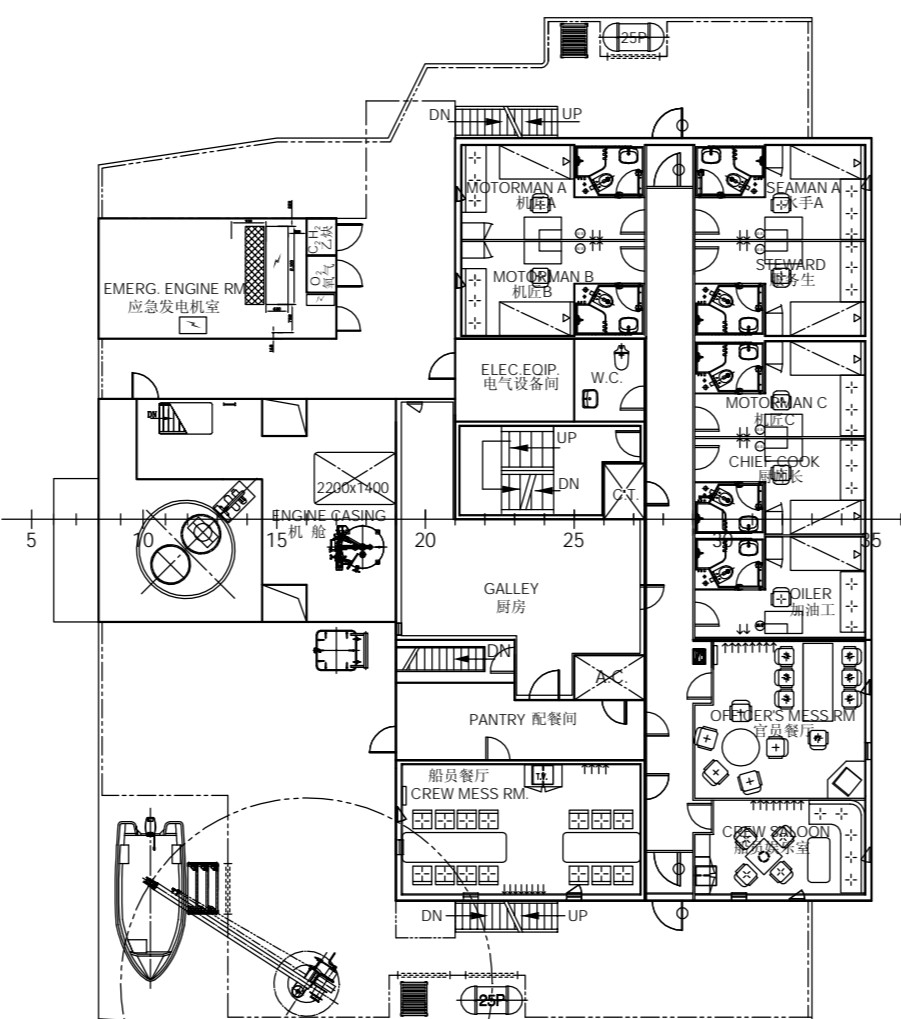
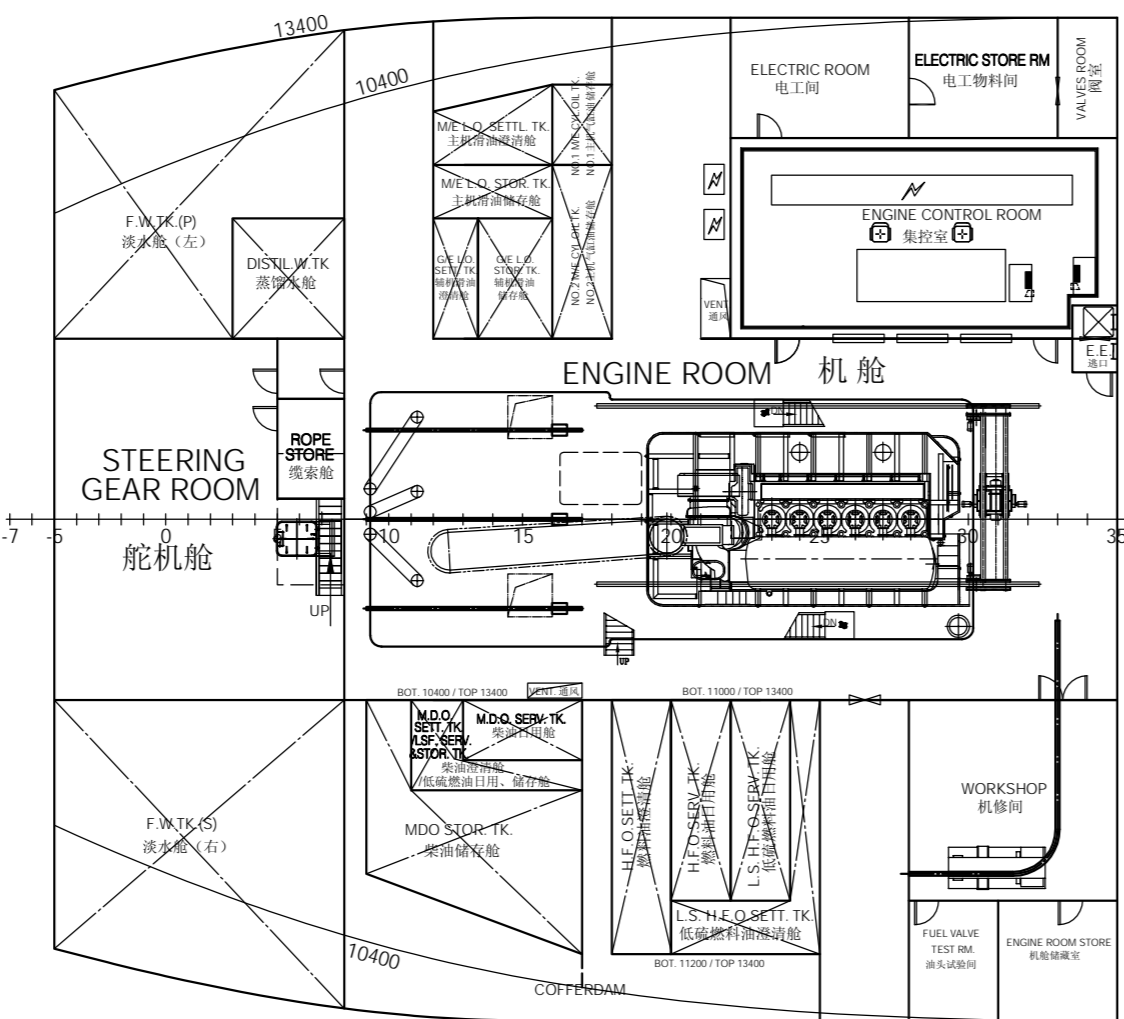
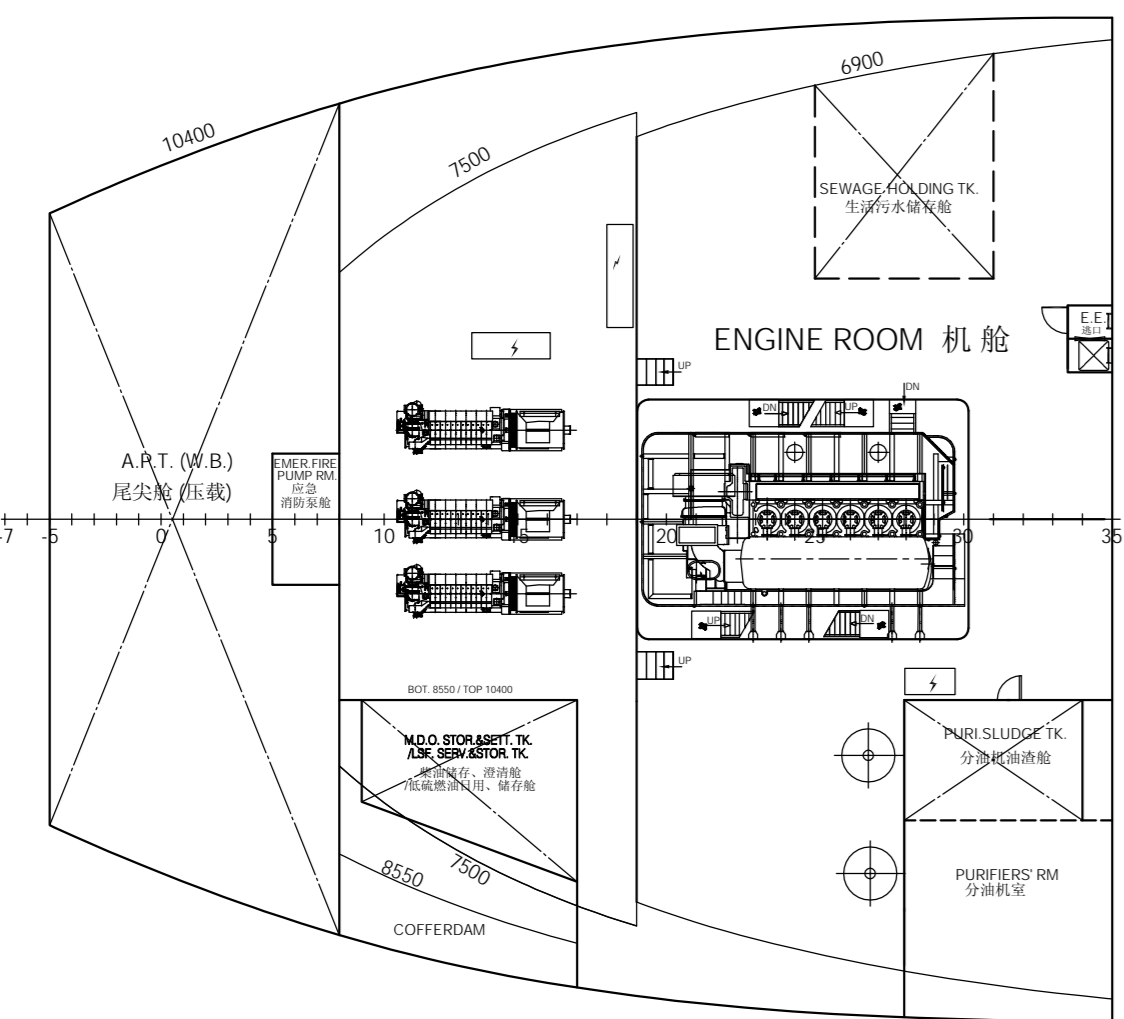
C甲板

BRIDGE DECK

驾驶室甲板

COMPASS DECK

罗经甲板



UPPER DECK (3P)

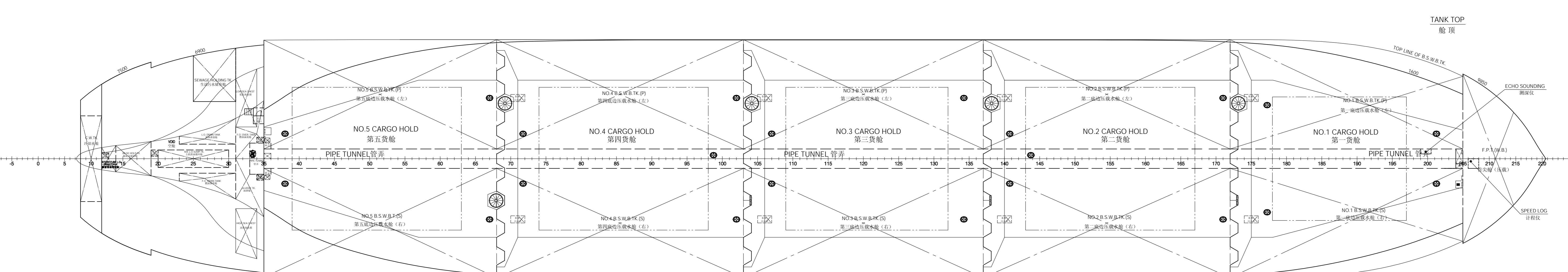
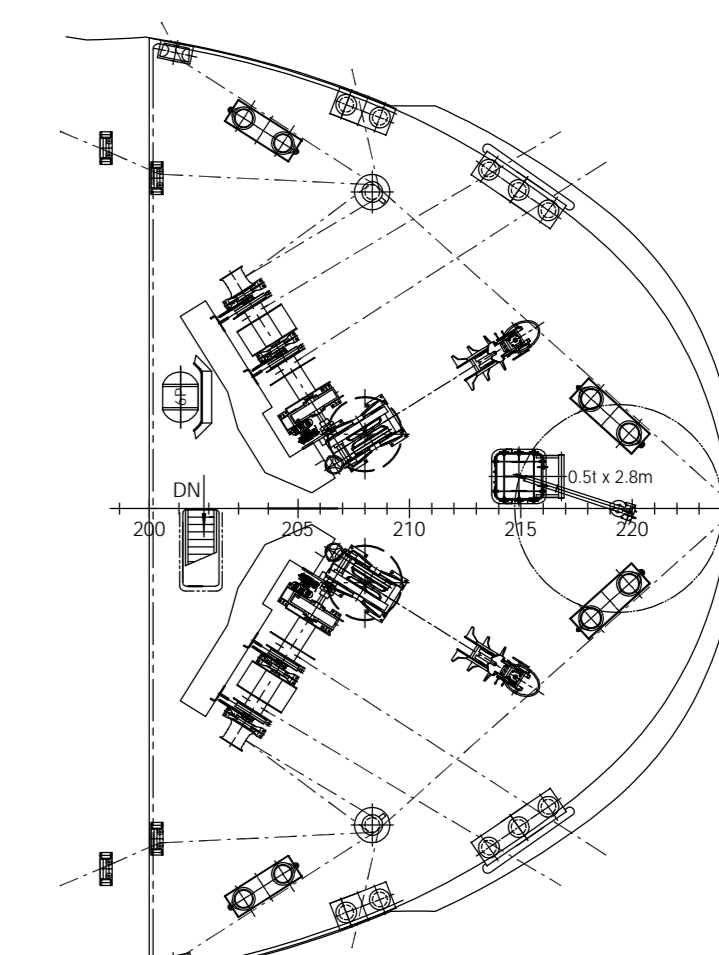
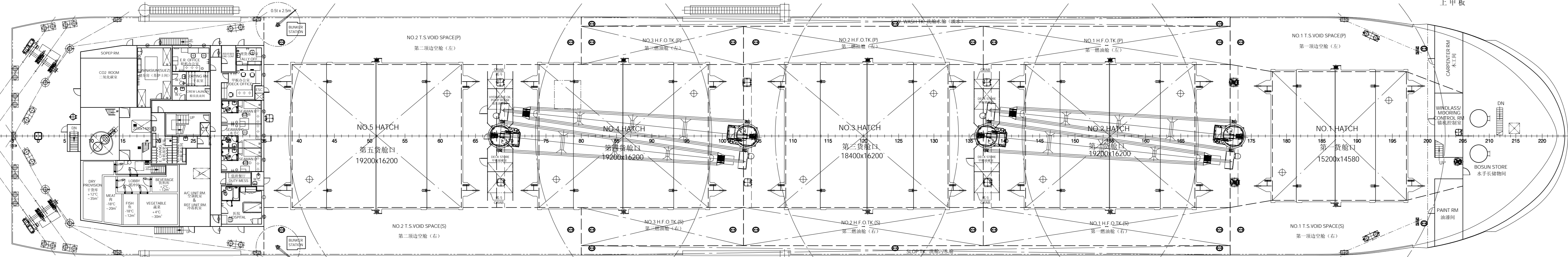
上甲板

UPPER DECK

上甲板

FCLE DECK

首楼甲板



PRINCIPAL PARTICULARS 主要要素

LENGTH (O.A)	总长	abt. 176.5 m
LENGTH (B.P)	垂线间长	171.0 m
BREADTH (MLD)	型宽	27.0 m
DEPTH (MLD)	型深	14.2 m
DESIGNED DRAFT	设计吃水	9.5 m
SCANTLING DRAFT	结构吃水	10.0 m
DEADWEIGHT (AT SCANTLING DRAFT)	结构吃水载重量	abt. 32300 t
CAPACITY OF CARGO HOLDS	货舱容积	abt. 40000 m ³
MAIN ENGINE	主机	MAN B&W 6S42MC7 1 SET
	M.C.R	6480 KW X 136.0 r/min
	C.S.R (0.9 M.C.R)	5832 KW X 131.3 r/min
SERVICE SPEED	服务航速(T=9.5 m, CSR, 15% S.M.)	abt. 14.0 kn
ENDURANCE	续航力	abt. 15,000 n.mile
COMPLEMENT	船员定额	24 Persons + 1 Pilot
CLASSIFICATION	船级	DNV*1A1 Bulk Carrier ESP ES(S) CSR
		BC-A GRAB(25), Hold 2, 4 may be empty.
		BIS E0 TMON BWM-E(F)

FINISHED DESIGN	完工设计	32,000 DWT O/BULK CARRIER	SC4576G1-100-04		
CURRENT REVISION	当前版本	32,000DWT O/Bulk Carrier	HULL NO.: GWS401		
DESIGNER	设计者	GENERAL ARRANGEMENT PLAN	图号	比例	日期
CHECKER	校核者	总布置图	1/1	1:200	2012-08-28
APPROVER	审批者				

SHIP NAME	TBC	PROGRESS
NO.	0488021	
DATE	2012-09-20	

This drawing and the information contained is the exclusive property of SDARI and must not be copied or handed over to third parties without our written permission.
 本图(文件)及所含内容均归上海船舶研究设计院(SDARI)所有,未经本院书面许可,任何人不得复制或转交第三方。
 面积:1.00m²

在 兹
 轮机
 张军红
 电气
 金永福

出图图号
 底图图号