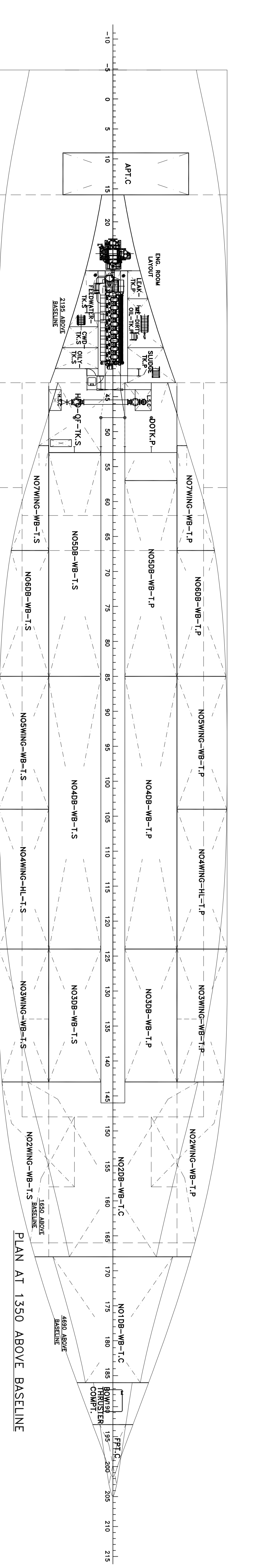
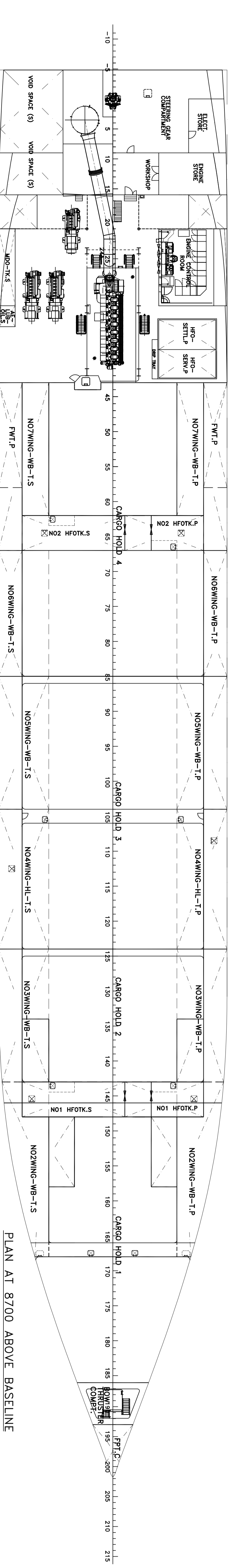
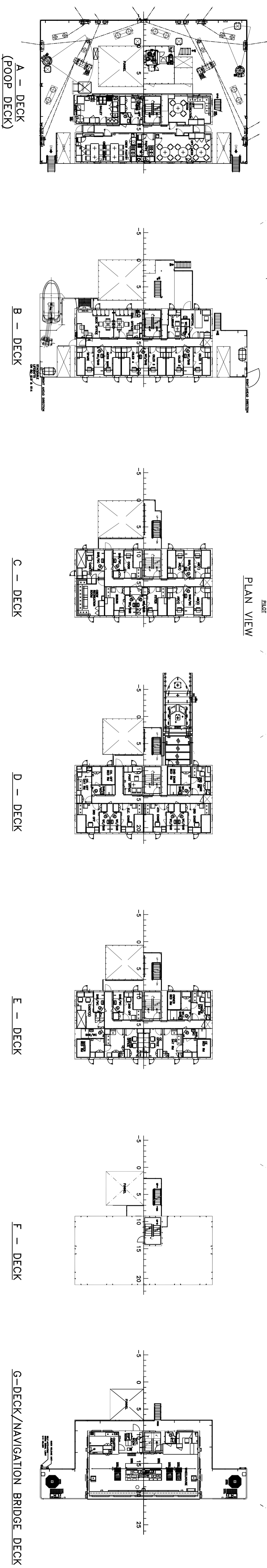
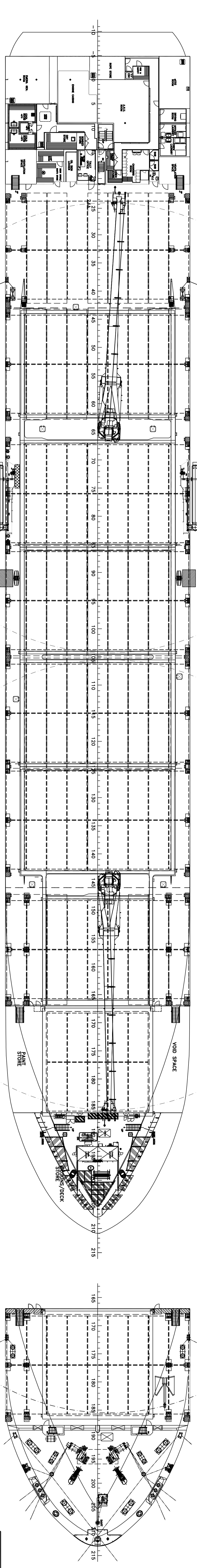
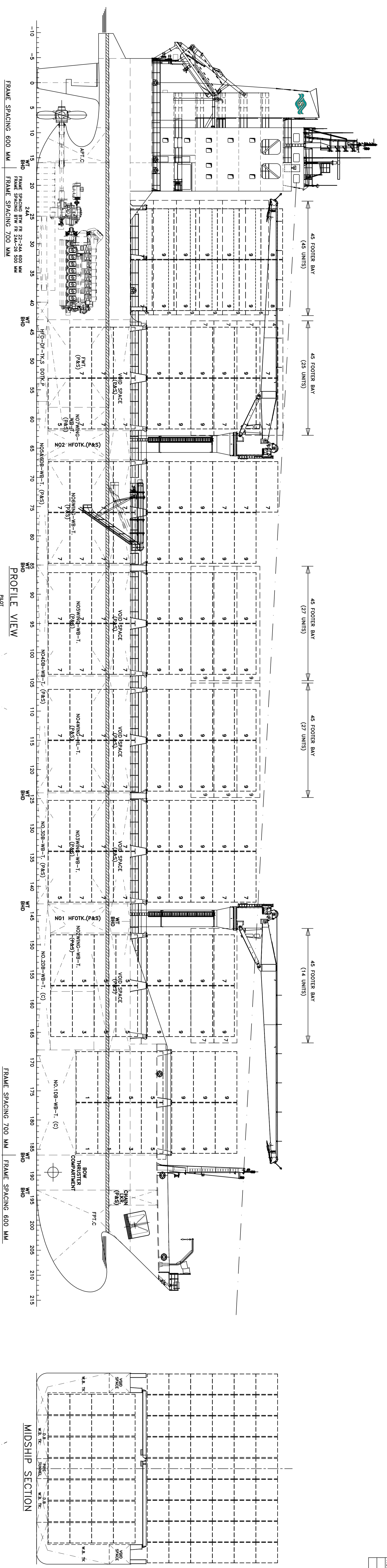


ITEM NO.	MANUFACTURER / DESCRIPTION	QTY	UNIT	WEIGHT / SIZE	ZONE



DECK DEPT.	ENG. DEPT.	OTHER DEPT.
MASTER	1 CHIEF ENG.	1 PILOT/SPARE 1
CHIEF OFF.	1 2ND ENG.	1
2ND OFF.	1 3RD ENG.	1
3RD OFF.	1 4TH ENG.	1
OWNER	1 ELECT. ENG.	1
CADET	7	5
OILER	4 BOSSUN	1 COOK
FITTER	1 AB. SEAMAN	4 MESS MAN
		1
TOTAL NO. OF OFFICER		
TOTAL NO. OF PETTY OFFICER		
TOTAL NO. OF DECK/ENGINE CREW		
GRAND TOTAL		

CLASS
ABS + A1(E) + AMS - ACCU "Container Vessel"

CONTAINER CAPACITY
ISO 20'x8'x8'6" CONTAINER ON DECK 703 TEU
ISO 20'x8'x8'6" CONTAINER IN HOLD 327 TEU
TOTAL CONTAINER CAPACITY 1030 TEU

PRINCIPAL DIMENSIONS
LENGTH OVERALL Approx. 150.70 m
LENGTH BETWEEN PERPENDICULARS Approx. 137.70 m
BREADTH MOULDED Approx. 22.90 m
DEPTH TO MAIN DECK Approx. 11.20 m
DESIGN DRAUGHT MOULDED Approx. 7.30 m
SCANTLING DRAUGHT MOULDED Approx. 8.30 m

H 1
BO 612
M.V. OEL BLESSING
AS FITTED

ST Marine
A company of ST Engineering

1030 TEU CONTAINER VESSEL
GENERAL ARRANGEMENT

DATE: 01-01-14
SCALE: 1:200
SHEET: 1 OF 1