

Table with columns: Equipment, Types, Manufacturer, Supplier. Lists various systems like Radar, Doppler log, GPS satellite, etc.

Table titled 'RADIO EQUIPMENT' with columns: Equipment, Types, Manufacturer, Supplier. Lists radio equipment like ERBB 406 MHz, 2 VHF radiotelephone, etc.

DESTINATION: Carriage of 20 or 40 containers on holds, on deck covers on an deck height of holds applicable for 4 tiers of 8'6" containers and one tier of 9'6" except hatch No 2 which carries 6 tiers of 8'6" containers...

SPEED: Service speed (at 0.90 m draught) - 19.2 km/h. Fuel consumption: at 54.6 m³/24 hrs HFO. Churning range: at 10.0 m³/24 hrs HFO.

MAIN PROPULSION: One two-stroke crosshead engine SULZER Licence H.CEDEL50 type 6474ZU, rating 13320 kW at 113 rpm. One auxiliary water turbo boiler, vertical, 2.0 t/h, 0.7 MPa.

STEERING GEAR: One electrohydraulic steering gear, HYDROSTAR, type MS 500, rating 500 kNm.

BOW THRUSTER: Manufactured by ABB ZAMCH Ltd, Lison, licence type T760, rating 550 kW at 337 rpm, thrust 90 kN.

BOILERS: Manufactured by ALBORG A/S, for HFO tank heating and steam heating. One auxiliary water turbo boiler, vertical, 2.0 t/h, 0.7 MPa.

EVAPORATOR: Manufactured by ALFA-LAWAL, capacity 20 / 24h.

BALLAST SYSTEM: One centrifugal, self-priming type pump of 350 m³/h capacity. One additionally one spare SW cooling pump of 420 m³/h capacity with emergency to the ballast system.

HATCH COVERS: Nine hatches fixed on the main deck, opening size: No.1 Hatch - 24.8 x 13.0 m. No.2 Hatch - 12.48 x 20.60 m.

HATCH WEIGHTS: No.1 Hatch - PS or SB - 18.5 t. No.2 Hatch - PS or SB - 22.1 t. Centre - 18.0 t.

CONTAINERS STACK LOADS: Hatch covers - on No.1-2 Hatch - 45 t/TEU, 60 t/TEU. Main deck (frame 42-62) - 45 t/TEU, 60 t/TEU. Holds - 140 t/TEU, 175 t/TEU.

UNIFORM LOAD: Hatch covers - 1.75 t/m². Main deck (frame 42-62) - 1.60 t/m². Timestep - 0.30 t/m².

REEFER PLUGS: 120 sockets for reefer containers 3x440 V, 60Hz, 13.5 kW. 96 pieces on hatch coverings. 24 pieces on superstructure front. 60 PCS. made by WILCO, type 32/1-3n (3 sockets) - 60 PCS.

CRANES: Three deck cranes HUNGLOUIS 40 G525-2 type, radius 100 m. One life boat raft and stowing crane TONMCR type PP-113, rating from 19.2 t up to 100 t/160 t.

WINDLASSES: Two combined windlass and automatic mooring winches 100 kN, made by HATLAPA, cable lift for 40 mm x 40 mm...

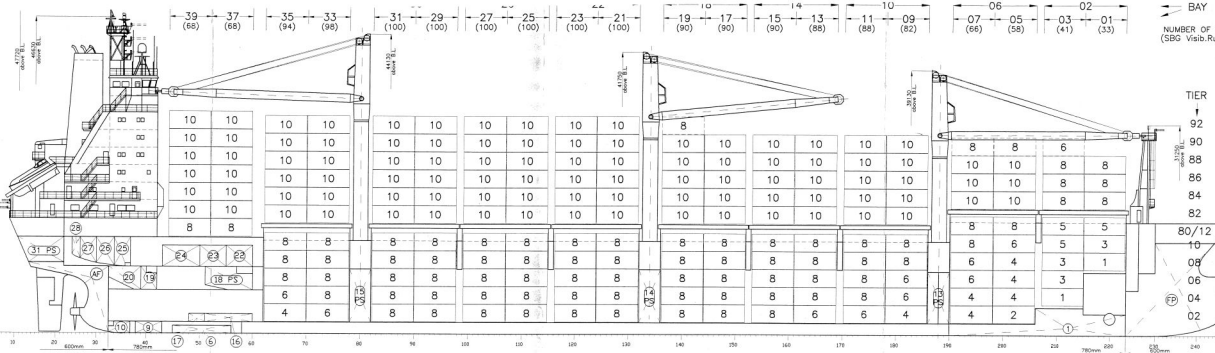
SAFETY EQUIPMENT: One free fall life boat type FR78-40 for 33 persons. Four lifeboats detachable, with capacity for 16 persons each...

FIRE FIGHTING: Engine room, cargo holds - high pressure CO2 systems. Weather decks - water fire system. No.1 Hold (optionally) - water spraying system.

HOLD VENTILATION: Auto-flow fans made by WITT & SONN, No.1, 2, 3, 4, 5 holds - 6 or 8 changes/h.

AIR CONDITION: Two air conditioning systems, made by KILMOR, No. 1, 2, 3, 4, 5 holds - 6 or 8 changes/h.

EQUIPMENT FOR SWZ Canal, Panama Canal.



m/v NORDCLOUD. GL CLASS: 80100 A5 E CONTAINER SHIP, IW, NAV.-0, SOLAS II-2, Reg.54, MC E AUT. Builder: STOCZNA SZCZECIŃSKA S.A. ul. Hultschke 11, SZCZECIN, Poland No B185-II/10.

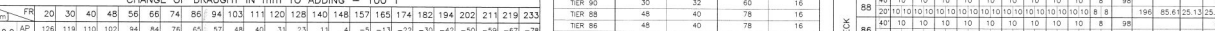
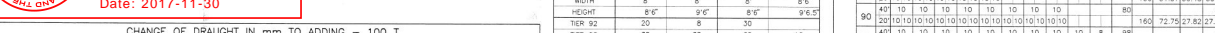
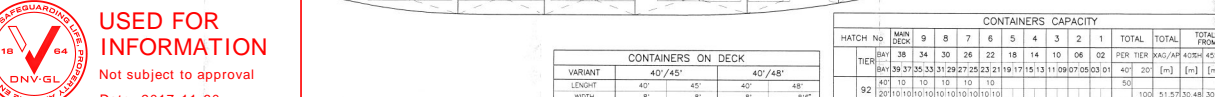
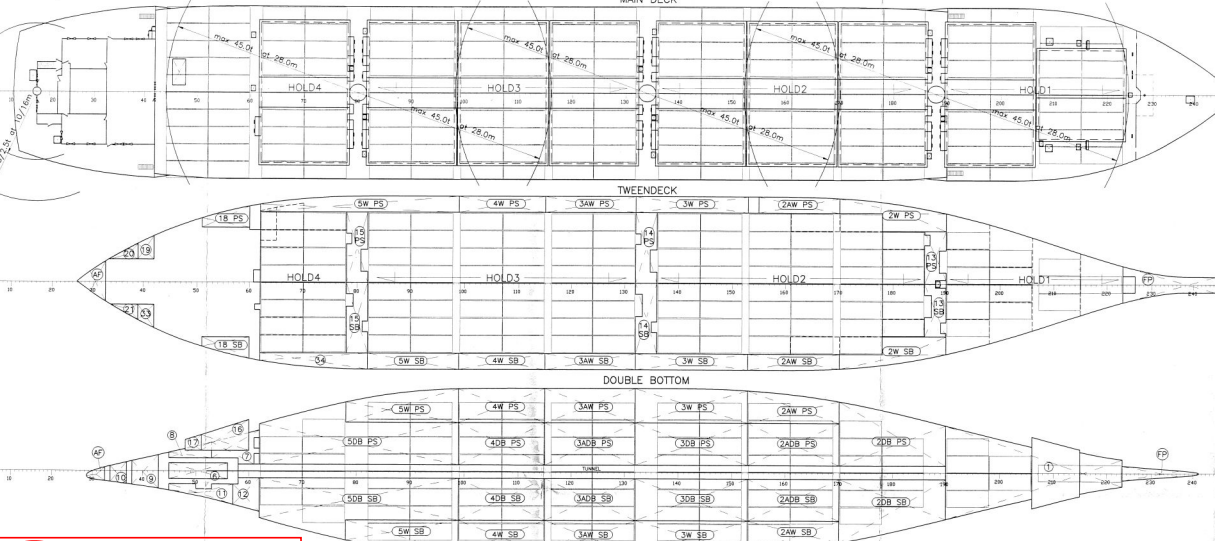


Table titled 'CONTAINERS CAPACITY' showing details for hatch and hold capacities, including variant options and weight details.

Table titled 'CHANGE OF DRAUGHT IN mm TO ADDING - 100 T' showing draught change for different container configurations.

Table titled 'CONTAINERS ON DECK' showing capacity for different deck configurations.

Table titled 'CONTAINER-CAPACITY MAX HEIGHTS OF CONTAINERS' showing height restrictions for different configurations.

Table titled 'TOTAL ON DECK' showing total capacity for deck configurations.

Table titled 'TOTAL ON HOLD' showing total capacity for hold configurations.

Table titled 'TOTAL N HOLS' showing total capacity for hold configurations.

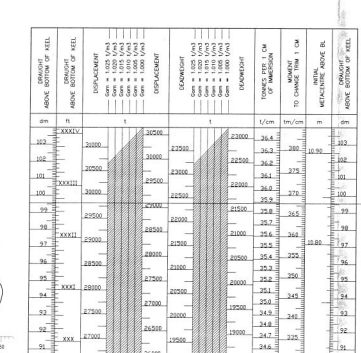


Table titled 'WATER BALLAST' showing capacity for various ballast tanks (Forepeak, No. 1-5 W Tank, etc.).

Table titled 'HEAVY FUEL OIL' showing capacity for heavy fuel oil tanks (No. 1-5 W Tank, etc.).

Table titled 'DIESEL OIL' showing capacity for diesel oil tanks (No. 20, 21, 22, 23, etc.).

Table titled 'LUBRICATING OIL' showing capacity for lubricating oil tanks (No. 24, 25, 26, 27, etc.).

Table titled 'FRESH WATER' showing capacity for fresh water tanks (No. 28, 29, 30, 31, etc.).

Table titled 'DRAINS, SLUDGE' showing capacity for various drain and sludge tanks (No. 32, 33, 34, 35, etc.).

Table titled 'CARGO COMPARTMENT' showing capacity for cargo compartments (No. 1, 2, 3, 4, etc.).

Table titled 'TONNAGES' showing gross, net, and deadweight tonnage.

Table titled 'MAIN DIMENSIONS' showing length overall, length between perpendiculars, breadth, depth, etc.

Table titled 'CAPACITY PLAN' showing the distribution of various capacities.

